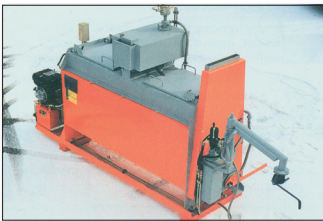




08/2021

Preheater HK range



Horizontal preheaters are heated indirectly (with heat transfer oil) by gas or oil burners (12V, 24V oder 230V)

- Oil heated dividing wall (with passing) increases melting capacity

Info: Heating

Direct heating

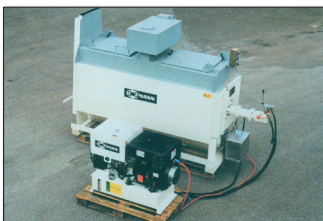
This method of heating ensures the greatest melting capacity.

However, the danger of local overheating in the melting pot requires you to monitor the heating closely for melting temperature, filling level and agitator operation.

Indirect heating

A heat transmission oil bath encloses the melting pot to ensure a uniform heat transmission and gentle heating without local overheating in the melting bath.

Suitable for sensitive melting material and ideal if you wish to rely entirely on the temperature control system.



- ① Two HK800-1 with diesel oil burner, 10 kW power station
- ② HK1000-1 with propane gas burner, 3 kW power station and transfer pump
- ③ HK1000-1 with oil burner, 10 kW power station with generator
- ④ HK1000-1 with propane gas burner, 3 kW power station, on trailer 3000HG



Technical Data

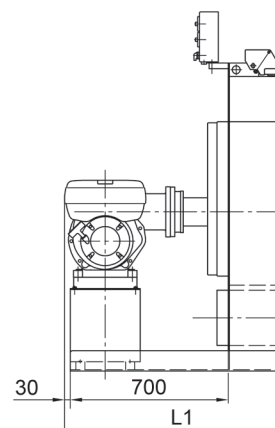
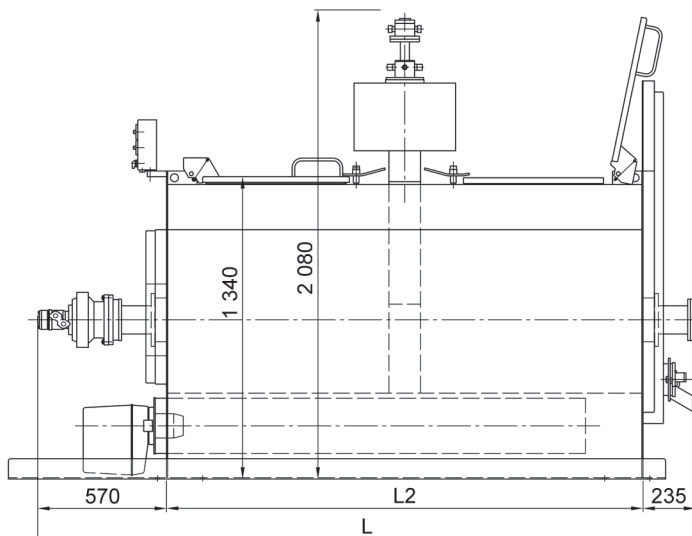
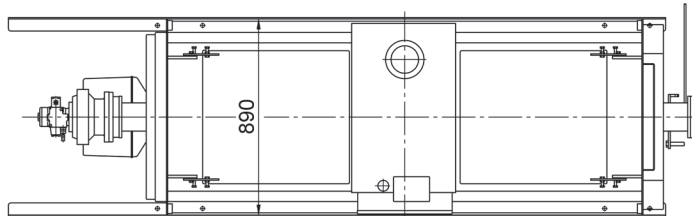
Preheater:

Heating – Type	Container volume (gross): Material [l] / Thermal oil [l]		Dimensions [L x L1 x L2 mm]	Weight [kg/lbs] (without power station)
HK800-1 - indirectly	880	430	2 550 x 2 700 x 1 710	1 310/ 2 885 (incl. thermal oil)
HK1000-1 - indirectly	1 100	450	2 950 x 3 100 x 2 110	1 485/ 3 270 (incl. thermal oil)



Power station:

Engine	Heating / max.number of preheaters		Fuel [l] / Hydraulic oil [l]		Weight [kg/lbs]	Dim. LxWxH [mm]
1-cylinder 232 cm ³ , Hatz diesel engine, air-cooled 3,1 kW at 3 000 rpm	gas	1	3	20	115/253	510 x 420 x 805
3-cylinder 900 cm ³ , Kubota diesel engine, water-cooled 10,0 kW at 2 200 rpm (continuous speed)	gas + 24 V diesel + 230 V diesel	3 (depends on equipment)	64	70	390/860	1250 x 710 x 1100



(Customised sizes upon request)