

Know How ... about 2-component cold plastic – 90° cross profiled as agglomerate marking

Below stated are the results of the executed retro reflection tests at various measuring places at the federal freeway A2 km 1,70 - 18,37 with direction to Hannover/Germany:

Desired value

Reflection at daylight

$$Q_d \geq 160 \text{ mcd/m}^2 \text{ lx}$$

Night visibility at dry conditions

$$R_L \geq 150 \text{ mcd/m}^2 \text{ lx}$$

Actual value

Date of application:

Sep 2001

Date of test:

17.09.2001

Measuring device:

LT 2000

Night visibility at dry conditions 2-component cold plastic - agglomerate		
No. of meas. values	5	each
Maximum	358	mcd/m ² lx
Minimum	341	mcd/m ² lx
Average value	348	mcd/m² lx

Actual value

Date of test: **23.01.2002**
Measuring device: Zehntner ZRM 1013

Reflection at daylight 2-comp.-coldplastic - Agglomerate		
No.of meas.values	9	each
Maximum	241	mcd/m ² * lx
Minimum	175	mcd/m ² * lx
Average value	204	mcd/m ² * lx

Night visibility at dry conditions 2-comp.-coldplastic - Agglomerate		
No.of meas.values	9	each
Maximum	328	mcd/m ² * lx
Minimum	206	mcd/m ² * lx
Average value	277	mcd/m ² * lx

Reflection at daylight 2-comp.cold plastic-90°cross-profiled		
No.of meas.values	10	each
Maximum	265	mcd/m ² * lx
Minimum	208	mcd/m ² * lx
Average value	236	mcd/m ² * lx

Night visibility at dry conditions 2-comp.cold plastic-90°cross-profiled		
No.of meas.values	10	each
Maximum	595	mcd/m ² * lx
Minimum	199	mcd/m ² * lx
Average value	352	mcd/m ² * lx

Comparison - actual values

of High Solid paint markings - filter range freeway A2

Date of application: **2. half-year 2000**
Date of test: **23.01.2002**
Measuring device: Zehntner ZRM 1013

Reflection at daylight HS Paint		
No.of meas.values	4	each
Maximum	255	mcd/m ² * lx
Minimum	187	mcd/m ² * lx
Average value	213	mcd/m ² * lx

Night visibility at dry conditions HS Paint		
No.of meas.values	4	each
Maximum	124	mcd/m ² * lx
Minimum	30	mcd/m ² * lx
Average value	75	mcd/m ² * lx

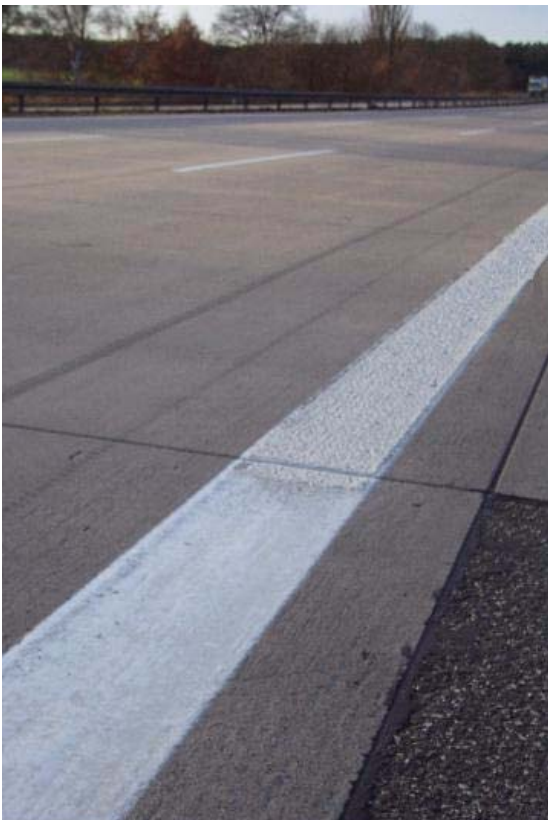
After the analysis of the determined measuring values we have opposed the different marking systems executed on the federal freeway A2 to day- and night photographs. Accordingly the determined measuring values have been confirmed after the visual examination.



Cross point border marking **CP profiled/
CP Agglomerate** on freeway A 2 at day,
direction Hannover, **km 5,0**



Cross point border marking **CP profiled/
CP Agglomerate** on freeway A 2 at night,
direction Hannover, **km 5,0**



Cross point border marking **Paint/
CP Agglomerate** on freeway A 2 at day,
direction Hannover, **km 12,5**



Cross point border marking **Paint /
CP Agglomerate** on freeway A 2 at night,
direction Hannover, **km 12,5**



Cross point border marking **CP Agglomerate/ CP 90°cross-profiled** on freeway A 2 at day, direction Hannover, **km 13,5**



Cross point border marking **CP Agglomerate/ CP 90°cross-profiled** on freeway A 2 at night, direction Hannover, **km 13,5**



Cross point border marking **Paint/ CP 90°cross-profiled** on freeway A 2 at day, direction Hannover, **km 15,3**



Cross point border marking **Paint/ CP 90°cross-profiled** on freeway A 2 at night, direction Hannover, **km 15,3**