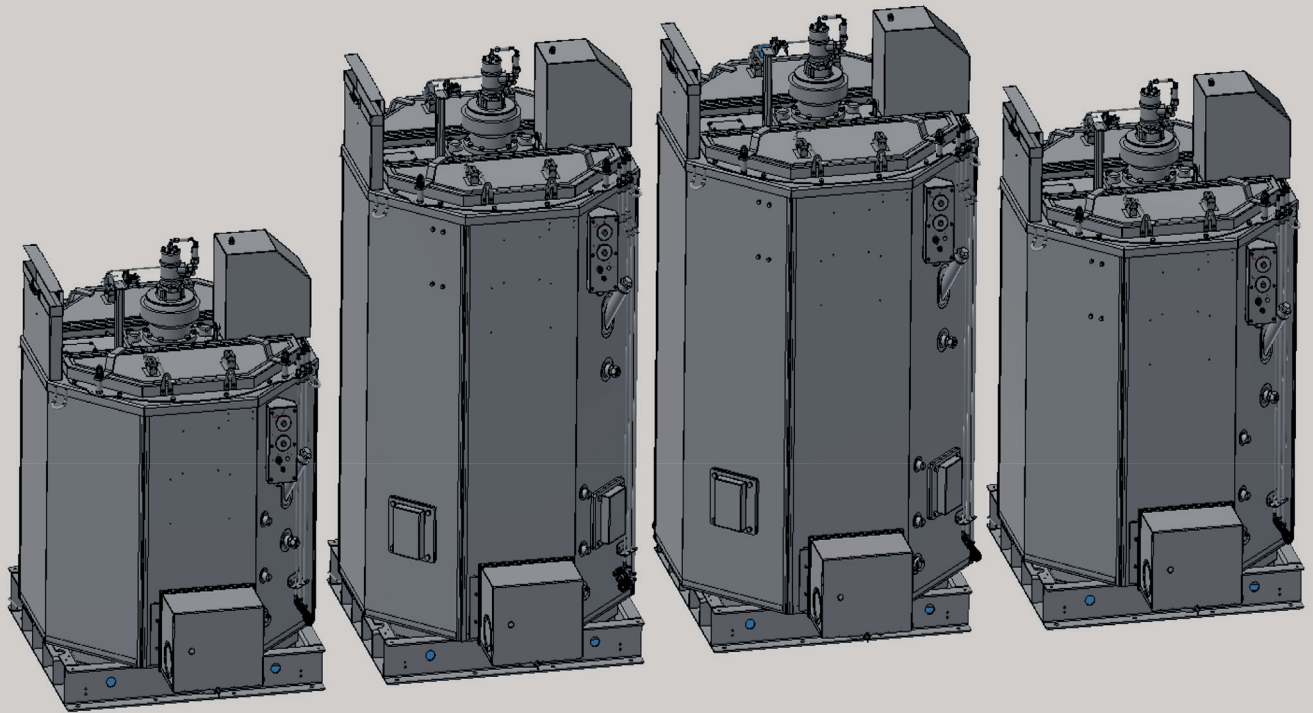




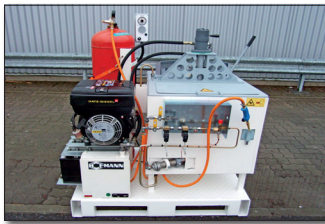
10/2021

Preheater D- / ID range

- ① ID-Range
(from left ID420-2, ID840-2, ID1100-2, ID630-2)



①



②

- ② **ID100**
Compact, **transportable unit consisting of preheater and power station**
- No seals exposed to material
 - High torque of the hydraulic agitator
 - **only** with propane gas burner, 3,1 kW power station



③

- ③ **D350**
Two D350 with propane gas burner, 10 kW power station

Vertical preheaters are heated directly (without heat transfer oil) or indirectly (with heat transfer oil) by gas- or oil burners (12V, 24V or 230V).

- Increased heat transfer surface.
- Heated central column for further enlargement of heating surface. Core of the material filling cannot rotate.
- Hydraulically top-driven agitator, agitator shaft mounted in central column. No seals exposed to material. Removal of agitator shaft possible, even if the pre-heater is filled and material is cold. High level of torque of agitator. Optimum access to the inside. Comfortable cleaning by easy removal of entire top section.
- Three material outlets (ID840-2 and ID1100-2).

Options:

- Air intake kit for oil burner.
- Material transfer system.
- Electrical adjustment for clockwise / counterclockwise rotation of the agitator.
- Electric agitator drive (with battery).
- Diesel oil burner for use with 100 % biodiesel.
- Heating module to preheat the heat transfer oil (option).

Info: e-Preheater

- It is an e-agitator drive and not an e-heating.
- Heating can be done in an environmentally neutral way using biodiesel.

Info: Heating

Direct Heating

This method of heating ensures the greatest melting capacity.

However, the danger of local overheating in the melting pot requires you to monitor the heating closely for melting temperature, filling level and agitator operation.

Indirect Heating

A heat transmission oil bath encloses the melting pot to ensure a uniform heat transmission and gentle heating without local overheating in the melting bath.


Suitable for sensitive melting material and ideal if you wish to rely entirely on the temperature control system.

Preheater D- / ID Range

Technical Data

Preheater



Type - Heating		Out-lets	Filling Quantity (gross) [l]	Thermal-oil [l]	Dimensions [mm]								Weight		
					L1	L2	L3	B1	B2	H1	H2	H3	[kg / lbs]		
D350 - direct	(1 Preheater)	1	350	without	1050	1625		940	1130	1580	995	280	445/981		
D520 - direct	(1 Preheater)	1	520	without	1050	1625		940	1130	1830	1235	280	640/1410		
D600-2 - direct	(1 Preheater) (2 Preheater)	1	600 1200	without	1705	2330	1151	1151	2302	1650	1272	311	650/1433 1300/2866		
D850-2 - direct	(1 Preheater) (2 Preheater)	1	850 1700	without	1705	2330	1151	1151	2302	1960	1582	311	760/1675 1520/3351		
ID420-2 - indirect	(1 Preheater) (2 Preheater)	1	420 840	132	1705	2330	1151	1151	2302	1650	1272	372	1040/2293 (incl. thermal oil) 2080/4585 (incl. thermal oil)		
ID630-2 - indirect	(1 Preheater) (2 Preheater)	1	630 1260	160	1705	2330	1151	1151	2302	1960	1582	372	1200/2645 (incl. thermal oil) 2400/5291 (incl. thermal oil)		
ID840-2 - indirect	(1 Preheater) (2 Preheater)	3	840 1680	144	1705	2330	1151	1151	2302	2308	1932	372	1535/3384 (incl. thermal oil) 3070/6768 (incl. thermal oil)		
ID1100-2 indirect	(1 Preheater) (2 Preheater)	3	1100 2200	165	1794	2420	1240	1240	2480	2308	1932	372	1480/3262 (incl. thermal oil) 2960/6525 (incl. thermal oil)		
ID100 - indirect (without sketch)		1	100	30	1300	-	-	1030	-	1440		-	(incl. thermal oil, with power station) 415/914		
Platform, stairs (1 Preheater)*			-	-	-	-	-	-	-	-		-	110/242		
Platform, stairs (2 Preheater)*			-	-	-	-	-	-	-	-		-	192/423		

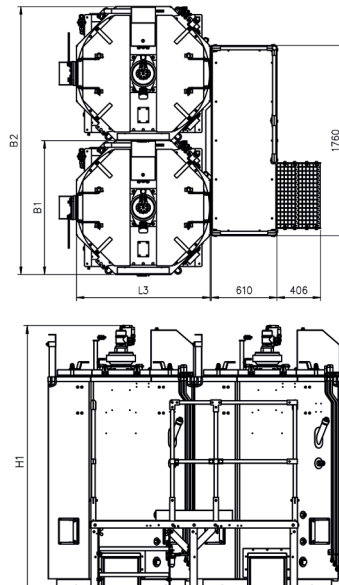
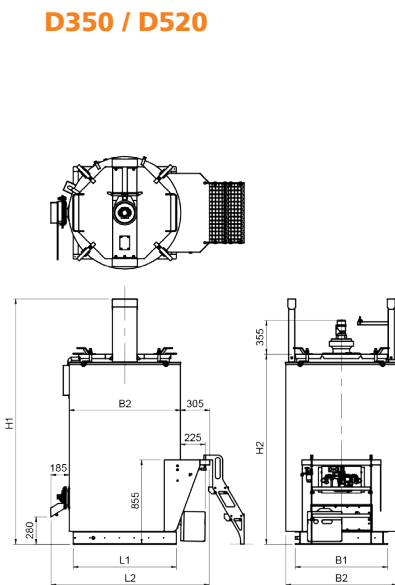
* only for D600-2, D850-2, ID630-2, ID840-2, ID1100-2

Preheater with electric drive upon request!

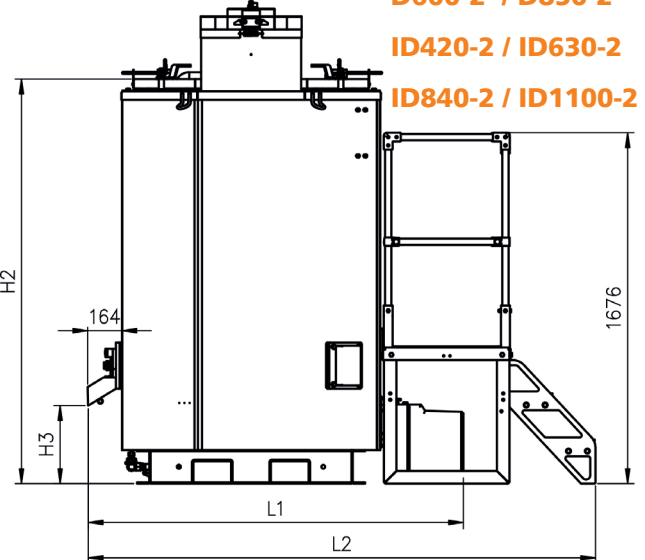
Power station:

Engine	Heating	max.n° preheaters	Fuel [l]	Hydraulic oil [l]	Weight [kg/lbs]	Dim. LxWxH [mm]
1-cylinder 232 cm ³ , Hatz diesel engine, air-cooled 3,1 kW at 3 000 rpm	gas	1	3	20	115 / 253	510 x 420 x 805
1-cylinder 347 cm ³ , Hatz diesel engine, air-cooled 4,6 kW at 3 000 rpm	gas (on request) + 24 V diesel	1	45	38	220 / 485	1040 x 560 x 835
3-cylinder 900 cm ³ , Kubota diesel engine, water-cooled 10,0 kW at 2 200 rpm (continuous speed)	gas (on request) + 12V/24V diesel + 230V diesel	3 (depends on equipment)	64	70	390 / 860	1250 x 710 x 1100

D350 / D520



D600-2 / D850-2 ID420-2 / ID630-2 ID840-2 / ID1100-2



(Customised sizes upon request)